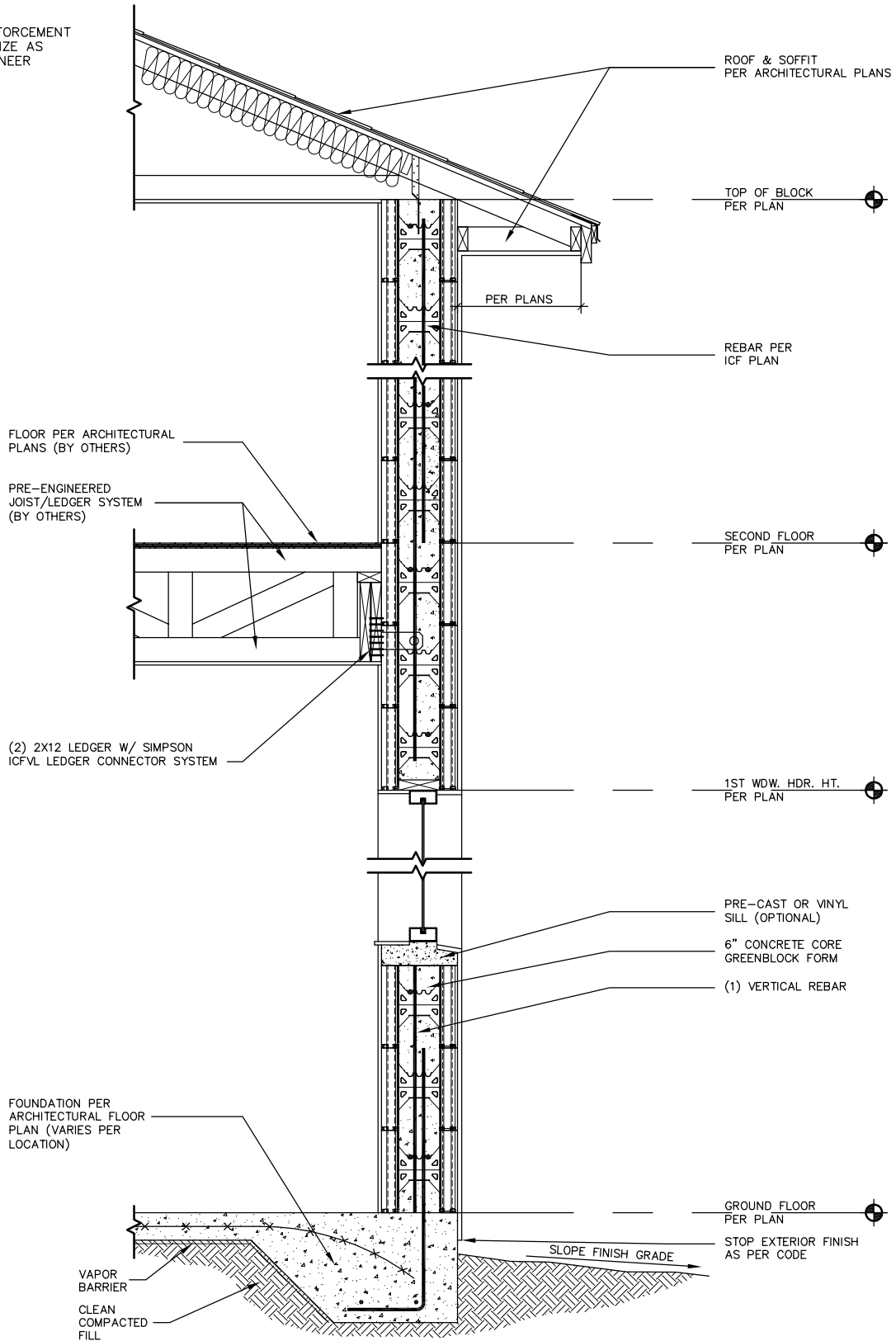


NOTE: STEEL REINFORCEMENT  
PLACEMENT AND SIZE AS  
SPECIFIED BY ENGINEER



Since 1967  
**GREENBLOCK**<sup>®</sup>  
Insulated Concrete Forms

Greenblock Worldwide Corporation  
759 S. Federal Highway, Suite 213  
Stuart, Florida 34994  
Phone: 772-223-8045  
Fax: 772-334-5554  
Toll Free: 1-800-216-1820  
[www.Greenblock.com](http://www.Greenblock.com)

**TWO-STORY GREENBLOCK WITH FLOOR  
JOIST AND SIMPSON ICFVL LEDGER HANGER**

REVISED DATE:	DRAWN BY: CAI
DATE: NOV 29, 2009	SCALE: NOT TO SCALE
DETAIL NUMBER	GB-151

DISCLAIMER NOTICE: SPECIFIC INFORMATION FOR COMPLIANCE WITH LOCAL CODES, CONSTRUCTION PRACTICES AND REQUIREMENTS IS THE RESPONSIBILITY OF THE DESIGNER REGARDLESS OF DETAILS SHOWN IN DRAWING. GREENBLOCK WORLDWIDE CORPORATION RESERVES THE RIGHT TO CHANGE THE INFORMATION SHOWN WITHOUT NOTICE.