

NOTES: DO NOT BACK FILL UNTIL LATERAL SUPPORT FLOOR JOISTS & BASEMENT FLOOR HAS BEEN INSTALLED

HORIZONTAL REBAR. TIE AS PER ENGINEER SPECIFICATIONS

WATERPROOFING/ DAMPPROOFING

HORIZONTAL REBAR

HORIZONTAL REBAR. TIE AS PER ENGINEER SPECIFICATIONS

CAULK OR CONCRETE COVE (OPTIONAL)

PERFORATED DRAINAGE TILE PER ENGINEER. CLEAR STONE COVER PER LOCAL CODE.

FREE DRAINING GRANULAR BACK FILL (PLACE BACK FILL ONLY AFTER FIRST FLOOR SYSTEM & BASEMENT SLAB INSTALLATION)

ZIP ON TIE WIRE USED TO SUSPEND REBAR IN WALL

SPECIFIED FIRE RATED GYPSUM BOARD TAPED, PLASTERED, SANDED & PRIMED. FINISH PER CONTRACTOR SPECS.

ZIP ON TIE WIRE USED TO SUSPEND REBAR IN WALL

HORIZONTAL REBAR. TIE AS PER ENGINEER SPECIFICATIONS

NOTE: ENGINEER SHALL SIZE FOUNDATION FOOTING PER SOIL BEARING CAPACITY @ BLDG. SITE SPECIFY REBAR SIZE YIELD & PLACEMENT

KEY IN FOOTING W/ WATER STOP OPTIONAL

CONCRETE SLAB ON GRADE

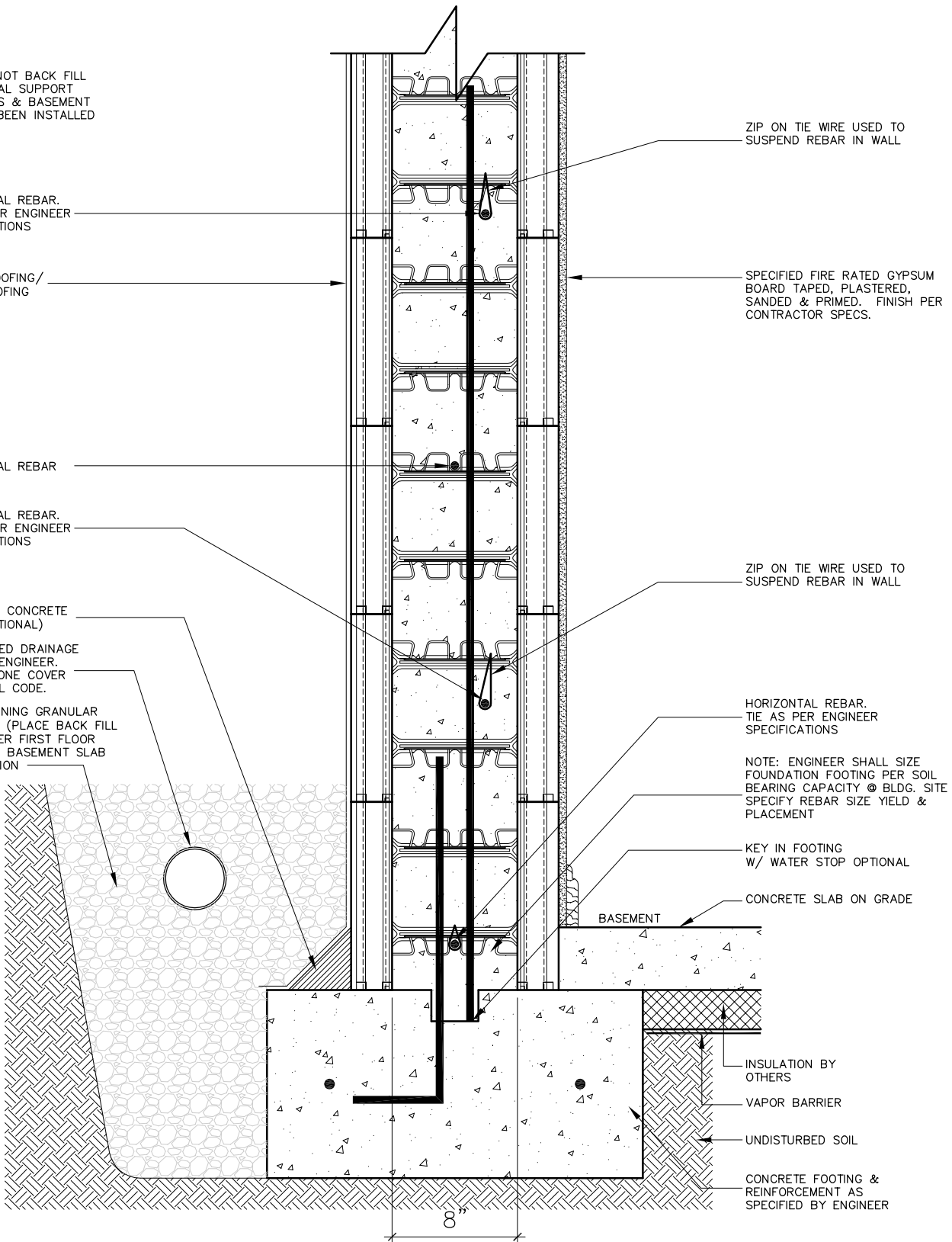
BASEMENT

INSULATION BY OTHERS

VAPOR BARRIER

UNDISTURBED SOIL

CONCRETE FOOTING & REINFORCEMENT AS SPECIFIED BY ENGINEER



Since 1967
GREENBLOCK®
 Insulated Concrete Forms

Greenblock Worldwide Corporation
 759 S. Federal Highway, Suite 213
 Stuart, Florida 34994
 Phone: 772-223-8045
 Fax: 772-334-5554
 Toll Free: 1-800-216-1820
 www.Greenblock.com

**8" CORE TYPICAL FOUNDATION
 WITH HORIZONTAL REBAR @ 16" O.C.**

| | |
|-----------------------|------------------------|
| REVISED DATE: | DRAWN BY: CAI |
| DATE: OCT 20, 2009 | SCALE: NOT TO SCALE |
| DETAIL NUMBER | GB-141 |

DISCLAIMER NOTICE: SPECIFIC INFORMATION FOR COMPLIANCE WITH LOCAL CODES, CONSTRUCTION PRACTICES AND REQUIREMENTS IS THE RESPONSIBILITY OF THE DESIGNER REGARDLESS OF DETAILS SHOWN IN DRAWING. GREENBLOCK WORLDWIDE CORPORATION RESERVES THE RIGHT TO CHANGE THE INFORMATION SHOWN WITHOUT NOTICE.