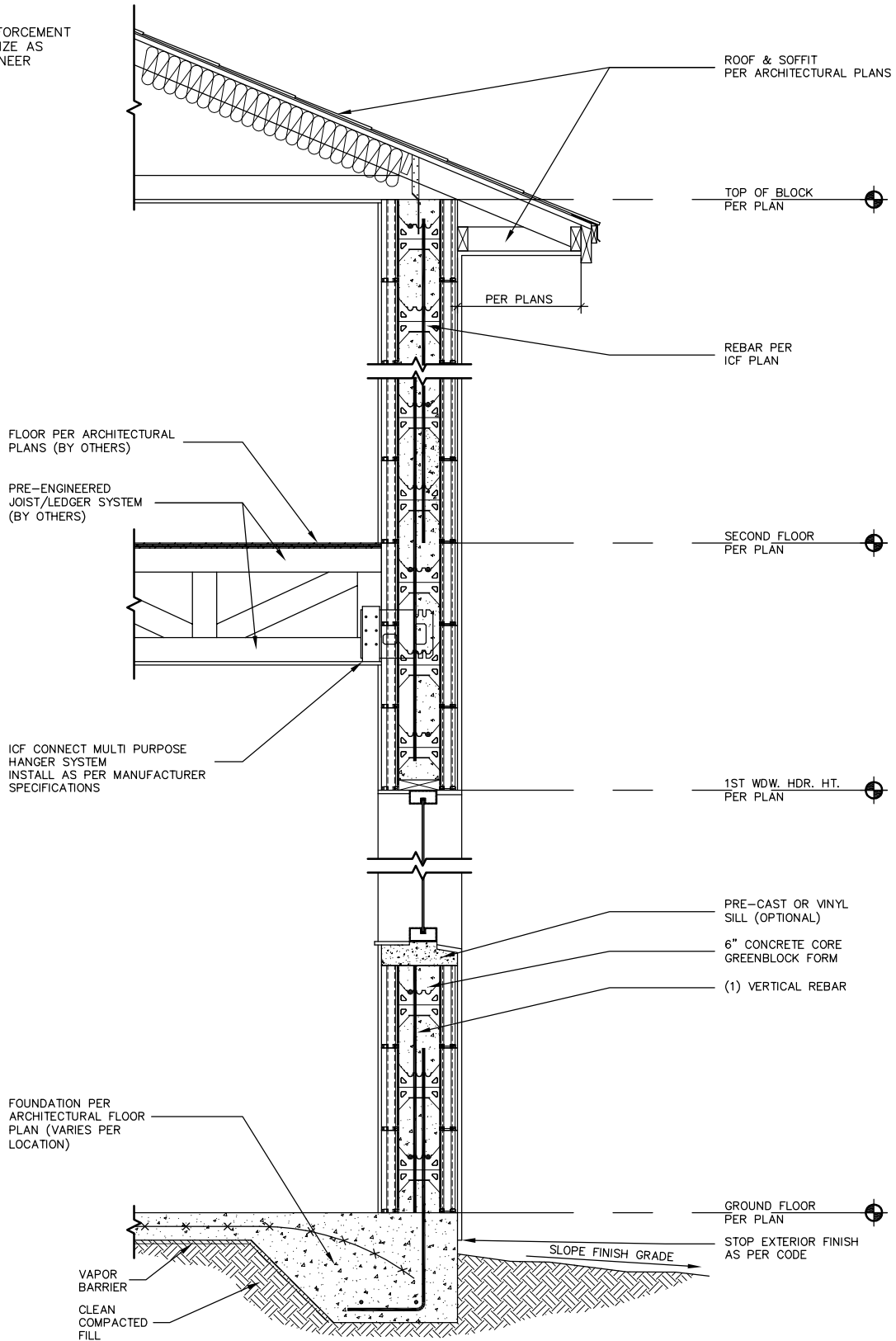


NOTE: STEEL REINFORCEMENT
PLACEMENT AND SIZE AS
SPECIFIED BY ENGINEER



Since 1967
GREENBLOCK[®]
Insulated Concrete Forms

Greenblock Worldwide Corporation
759 S. Federal Highway, Suite 213
Stuart, Florida 34994
Phone: 772-223-8045
Fax: 772-334-5554
Toll Free: 1-800-216-1820
www.Greenblock.com

**TWO-STORY GREENBLOCK WITH FLOOR
JOIST AND ICF CONNECT MULTI
PURPOSE HANGER SYSTEM**

REVISED DATE:	DRAWN BY: CAI
DATE: DEC 1, 2009	SCALE: NOT TO SCALE
DETAIL NUMBER	GB-152

DISCLAIMER NOTICE: SPECIFIC INFORMATION FOR COMPLIANCE WITH LOCAL CODES, CONSTRUCTION PRACTICES AND REQUIREMENTS IS THE RESPONSIBILITY OF THE DESIGNER REGARDLESS OF DETAILS SHOWN IN DRAWING. GREENBLOCK WORLDWIDE CORPORATION RESERVES THE RIGHT TO CHANGE THE INFORMATION SHOWN WITHOUT NOTICE.