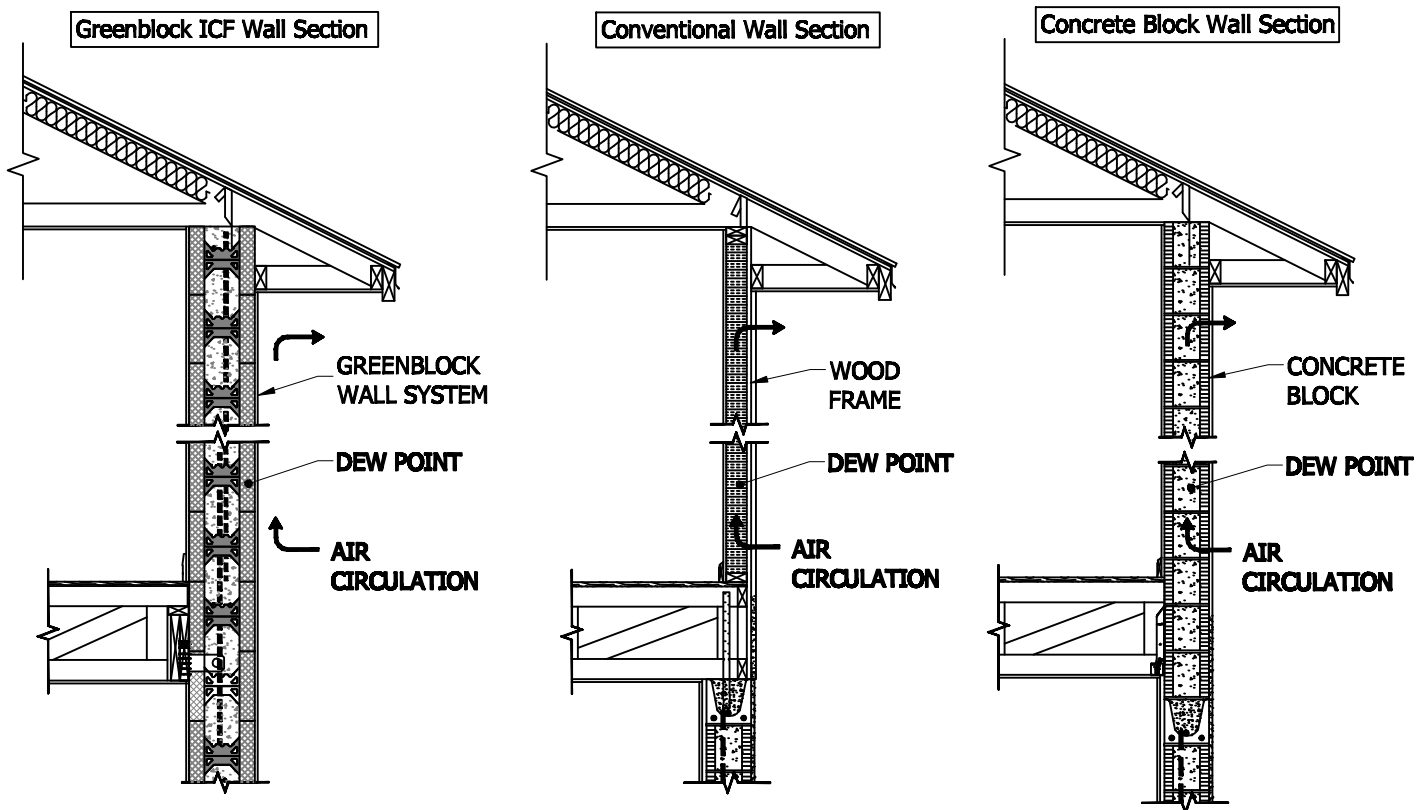


Vapor and Air Barrier

A Greenblock wall is a solid, monolithic concrete wall encased in EPS (expanded polystyrene) foam panels. The interior surfaces of the foam panels are ribbed with dovetail channels creating a positive foam to concrete adhesion. The Type II, (1.5 density) EPS panels serve as a form for the concrete wall and remain in place as insulation on both faces of the wall assembly. The interior surface temperature of the EPS foam is relatively close to the interior ambient temperature.

Since a Greenblock wall is insulated on both faces, the dew point will not penetrate through the wall assembly, so no vapor barrier is required. Additionally, the solid mass of the concrete between the two EPS foam panels will not allow air infiltration, thus acting as an air barrier.



D1

GREENBLOCK

VAPOR & AIR BARRIER

2431 SE DIXIE HIGHWAY PHONE: (772) 287-0525
STUART, FL 34996 FAX: (772) 220-8686



EB 0004456
AA C002026

MATHERS ENGINEERING CORPORATION
CIVIL STRUCTURAL ARCHITECTURE LAND PLANNING